

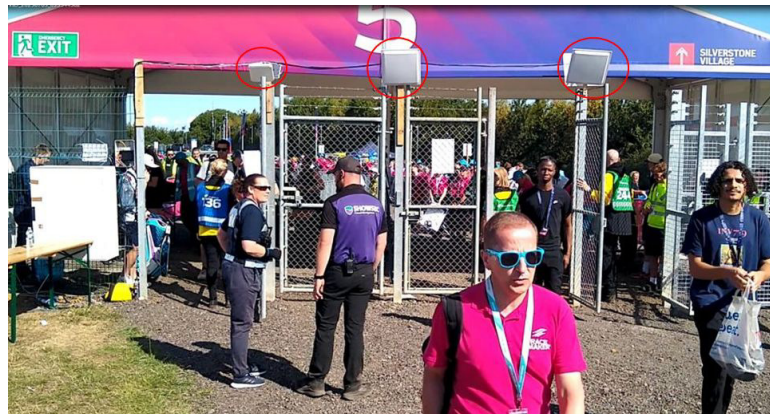
Pilot for RFID Access Control Service. Silverstone Racetrack July 2025

Service Overview

Approximately thirty thousand staff are engaged for the Silverstone F1 Grand Prix
The service monitored access and egress at two gates; Gate 4 and 5.
Each Staff Member were issued a CR80 Sized RFID Card on a lanyard
The cards contained UHF RFID embedded tags with a max 5 metre read range
UHF Scanning Antenna where strategically mounted above both gates
Via LAN access and egress data was collected, collated and populated a dashboard accessible by Silverstone Staff.

Implementation

UHF antenna continually scan for UHF Tags so any tag that comes in range will be recorded.
As UHF tags can be scanned up to a range of five metres and more it is important that the antenna are focussed correctly and that the power setting is correct.



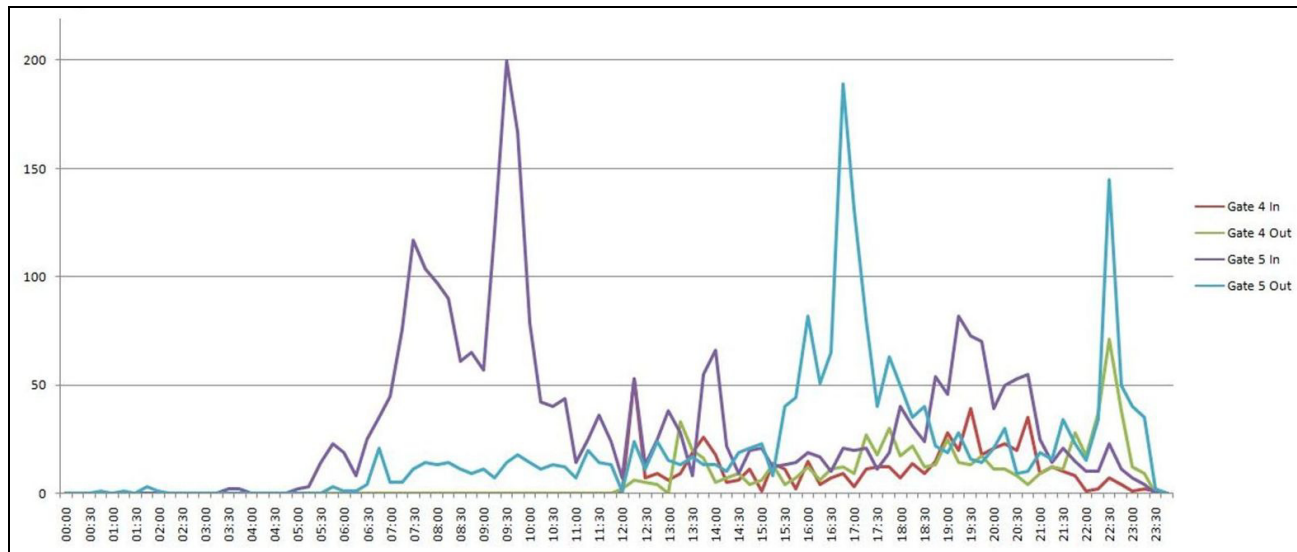
The antenna were therefore affixed above the access gates angled to record only the tags that access and egress and therefore not reading irrelevant tags.
In addition a dwell time limit was set to ignore a tag once it is read for a set time to permit the individual to clear the access/egress area to avoid multiple reads of the same tag.
When reporting to the dashboard the software is programmed to discard data from tags not recognised, multiple tag read after the set dwell period and any other criteria required by the reporting parameters.

Service Outcome

The two gates included within the Staff Access Control Trial were not the only gates that staff used for access and egress. The aim was to evaluate the RFID Service for future expanded deployment. Historically staff had only been scanned in but not out. All the RFID Lanyards assigned to staff accessing and egressing from Gates 4 and 5 were recorded. This means it is possible to know who is on site, when they arrived and when they departed and how frequently thus enhancing the level of management accountability.

In due course, with all gates covered by RFID Monitored Access Control great accountability is achieved with an accurate record of staff movements for budget management (accurate invoicing), welfare and individual safety.

The screen shot below show typical output from the scanners to the management dashboard available to track officials.



Previous days

Saturday	In	Out	All
Total Scans	16792	14027	30819
Unique Scans	3487	3503	6990

Download Saturday scans as CSV

Friday	In	Out	All
Total Scans	19496	14860	34356
Unique Scans	3320	3209	6529

Download Friday scans as CSV

Thursday	In	Out	All
Total Scans	21601	12472	34073
Unique Scans	2504	2397	4901

Download Thursday scans as CSV